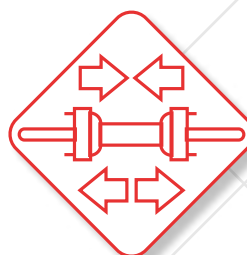




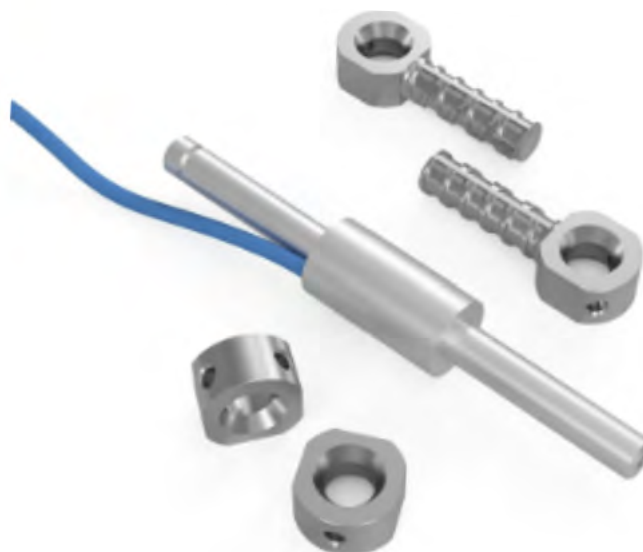
## Resistive strain gauge



[www.pizzi-instruments.it](http://www.pizzi-instruments.it)

Instruments and Systems for Geotechnical and Structural

## Resistive strain gauge



### Description

The resistive strain gauges are used to measure the stress in load-bearing structures or to monitor the tensions in tunnel linings, during tunnel excavation phases. Such control is necessary for the verification of the tensions and deformations of both temporary and permanent retaining structures.

The strain gauge sensors are installed in the centre of the rod according to a special arrangement that allows compensation of the electrical signal from thermal and reflection effects.

The strain gauge rod can work either in tension or compression, and the sensing part is resin-coated in order to preserve the functionality of the instrument in the event of impact or immersion.

The data can be read out using the portable control unit or by means of an automatic data acquisition system designed for continuous monitoring.

The rod is watertight and can be applied externally to stressed structures or embedded in concrete castings for stress measurements.

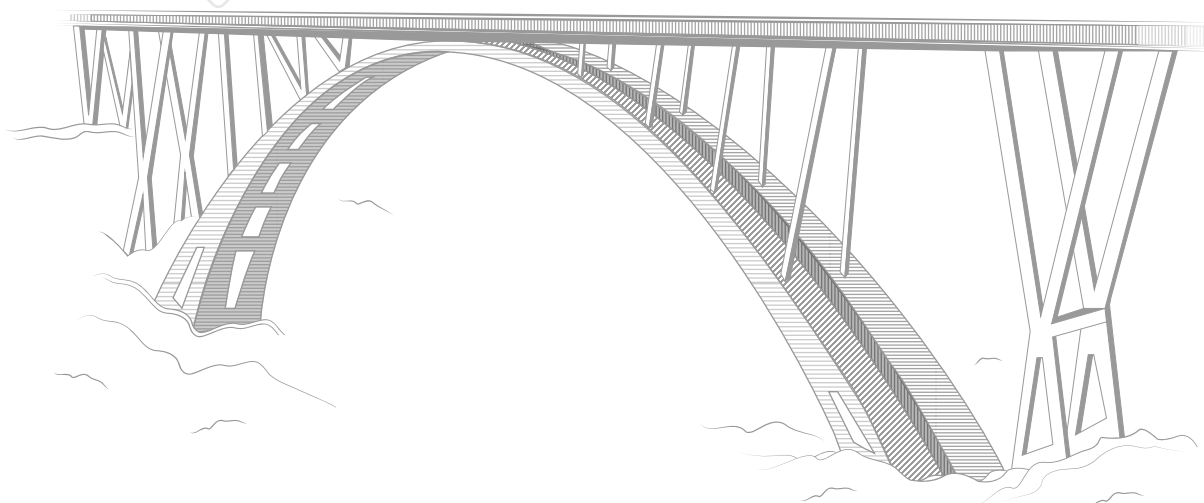
### Technical specifications

Sensor Type	internal strain gauge bridge
Material	Aluminium
Measuring Range	+/- 1400 $\mu$
Accuracy	+/- 0,5% FS
Sensitivity	2mV/V
Power supply	2-15 Vdc
Output signal	mV/V
Dimensions	diam. 25 mm, lungh. 150 mm
Temperature compensation	-10... +50°C
Protection class	IP68

## The Company

For over 40 years we have been producing precision and large facility monitoring instruments sold throughout the world.

Accuracy in design, efficiency in construction, reliability in management; these are the prerogatives that every major work must have and that Structural Monitoring Systems must guarantee.



### Technical assistance

If you have any requests or questions about our instruments or if you have special needs that require different solutions from the standard, please contact us. Our team will provide all the necessary information and will be very happy to work with you to study, develop and customize instruments and solutions suitable for your specific needs.

All data present in the sheets could change without notice.

Please check the release carefully and for more details contact Pizzi Instruments.

---

**Pizzi Instruments S.r.l.**  
Via del Fornaccio, 46  
50012 - Vallina - FI - Italia

Phone/Fax : +39 055 6810722  
info@pizzi-instruments.it  
www.pizzi-instruments.it

